

Mechanical Specifications

See below for a rendering of a JS-25 scanner with mounting brackets. The brackets bolt into the scanner using eight 0.5" 1/4-20 bolts. The scanner rotates within the brackets to allow more freedom when positioning the scanner. The brackets should be securely mounted to a solid surface with up to 5/16" diameter bolts.

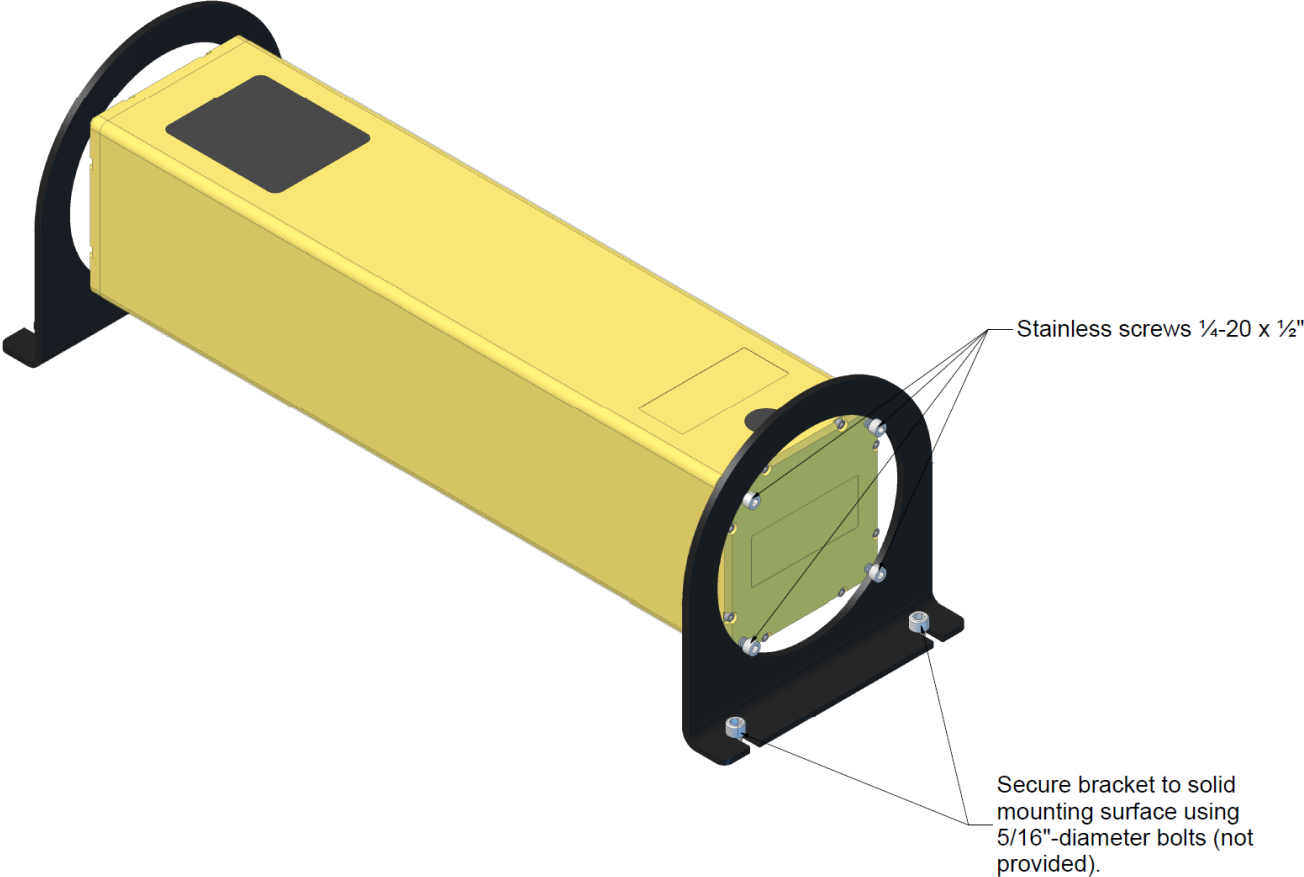
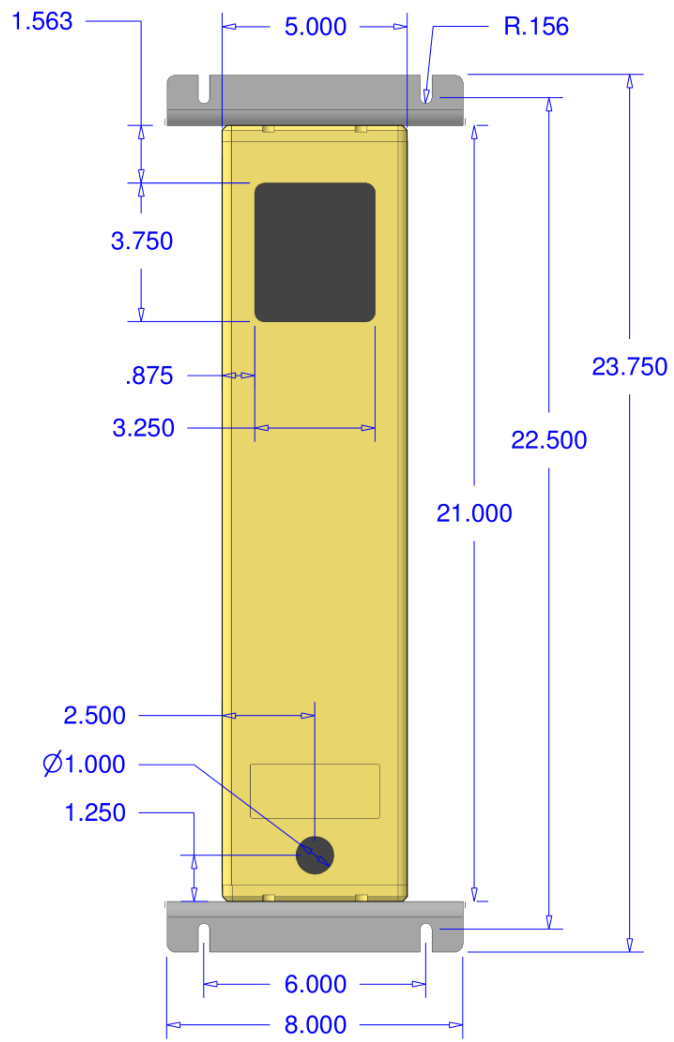


Table 1. Physical dimensions of single and three-laser scanners

Type	Single-Laser Scanner	
------	----------------------	--

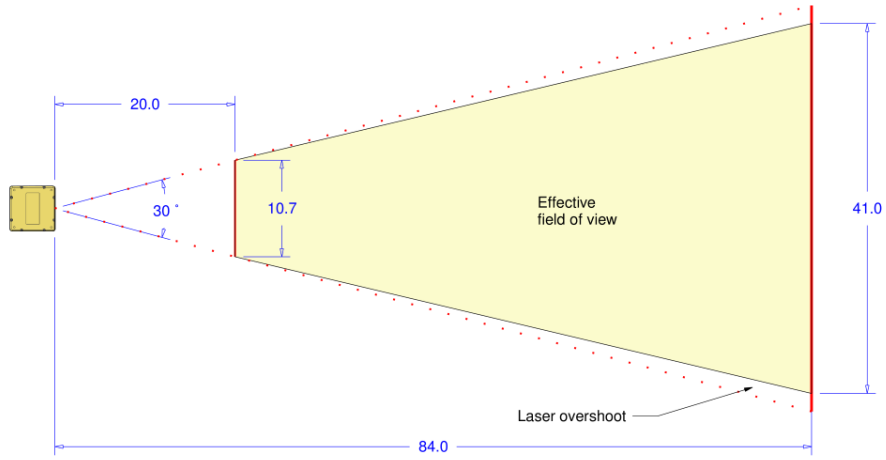


<p>Side View</p>		<p>4.</p>
<p>Side View with Mounting Bracket</p>		<p>Mounting Bracket (optional)</p> <p>R4.000</p> <p>Ø6.080</p> <p>4.000</p>

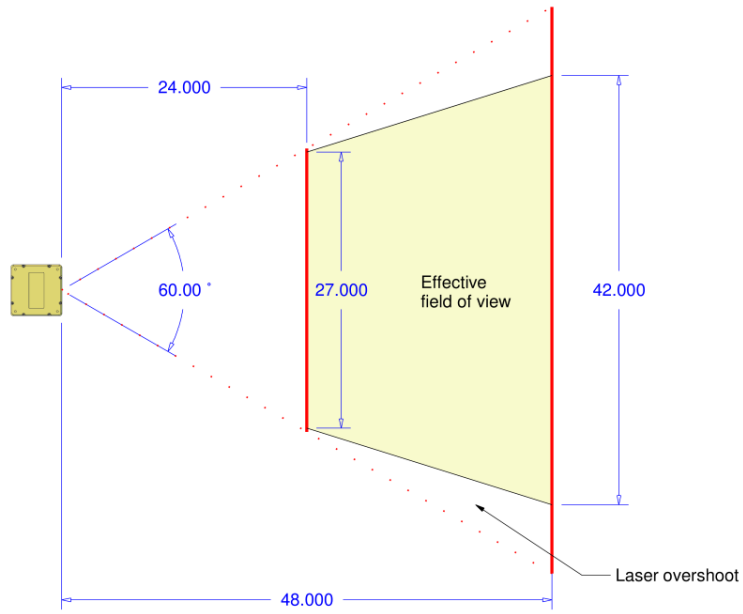
Table 2. Field of view of JoeScan JS-25 MX/WX/X3 scanner models

<p>Type</p>	<p>Top View</p>	<p>Sic</p>
-------------	-----------------	------------

JS-25
MX



JS-25
WX



JS-
25
X3

